

ENGINE

Model	FPT NEF6
Emissions Certification	Tier 4 Final/Stage V
Fuel	Requires ultra-low sulfur fuel B5 biodiesel tolerant
Type	Water-cooled, 4-cycle diesel, high pressure common rail system – electric control. Fixed geometry turbocharger w/ air cooled intercooler, ATS, EGR-free
Cylinders	6-cylinder in-line
Displacement	411 in ³ (6.728 L)
Bore/Stroke	4.09 x 5.2 in (104 x 132 mm)
Fuel injection	High pressure common rail system – electronic
Fuel filter	Replaceable, full flow spin-on cartridge
Air filter	Dry type dual element w/ warning restriction indicator
Oil filter	Replaceable, full flow spin-on cartridge
Engine gradeability:	
Side-to-side	35°
Fore and aft	35°
Rated flywheel horse power – SAE J1349 @ 2000 RPM:	
ISO 9249	179 hp (133.4 kW)
ISO 14396	185 hp (138 kW)
Net max. torque – SAE J1349 @ 1800 RPM:	
ISO 9249	474 lbf-ft (642 N·m)
ISO 14396	486 lbf-ft (659 N·m)
Cooling operating range:	113° to -4°F (45° to -20°C)
Oil	Requires low-ash oil CJ-4

DRIVETRAIN

Travel control	Dual stage relief/ counter balance design
Brakes	Mechanical disc
Service brakes	SAHR disc – each motor
Two speed travel:	
Max. high speed	3.4 mph (5.5 km/h)
Max. low speed	2.2 mph (3.5 km/h)
Automatic downshift	
Drawbar pull	44,700 lbf (199 kN)
Gradeability	70% – 35° Slope

ELECTRICAL

Voltage	24 Volts
Alternator rating	90 amp
Batteries	2 x 12 Volt
Battery reserve capacity	92 Ah/5 hour
Work lights – 4 1 boom, 1 upper, 2 cab	24 Volt/70 watt

OPERATOR ENVIRONMENT

Air conditioner output	18,100 BTU/hr
Heater output	20,150 BTU/hr
Sound level inside cab – ISO6396	70 dBA
Electrical outlet	12 Volt
Cab interior light	10 watt
Rear and side view cameras	

Operator's Cab:

Smooth and round shape design cab; Safety glass for all windows; Shock-less cab suspension by 4-point fluid mounting; Sliding front window w/ auto lock; 10" Full-color LCD monitor display; Membrane switch on monitor display; Switch panel (including throttle dial w/ eco-mode switch); Windshield wiper & washer; AM/FM/Bluetooth Radio w/ hands-free phone; Sectioned floor mat; Polycarbonate roof hatch & Sun shade; Auto air conditioner; Roll-over protective structure (ROPS); Top guard OPG level 1 (in cab structure).

Seat:

Low frequency air suspension w/ air springs and double acting hydraulic damper; Manual weight adjustment; Backrest angle adjustment; Seat height adjustment; Adjustable armrest (Angle and height); Adjustable headrest; Retractable seat belt; Adjustable lumbar support; Console mount on suspension; Control consoles adjust independently of seat.

ATTACHMENT

Boom	33 ft 10 in (10.3 m)
Arm	26 ft 3 in (8.00 m)
Bucket digging force*	17,300 lbf (77 kN)

NOTE: *Digging force ratings based on ISO6015.

OPERATING WEIGHT

Operating weight	63,900 lb (29 000 kg)
w/ shoes	31.5 in (800 mm)
w/ boom	33 ft 10 in (10.3 m)
w/ arm	26 ft 3 in (8.00 m)
w/ bucket	752 lb (341 kg)
w/ counterweight	16,200 lb (7 350 kg)

NOTE: W/ operator/full fuel/standard equipment.

GROUND PRESSURE

@ Standard operating weight 6.24 psi (0.43 bar)
w/ 31.5 in (800 mm) triple semi-grouser shoes

HYDRAULICS

System design	Open center
Main pumps	Two-variable displacement/ axial piston pumps w/ regulating system
Max. rated flow x 2	61.8 gpm (234 L/min) @ 2,000 RPM
System pressures:	
Boom, arm and bucket	4,970 psi (343 bar)
w/ Auto Power Up	5,410 psi (373 bar)
Arm In	3,060 psi (211 bar)
Boom Down	4,270 psi (294 bar)
Travel circuits	4,970 psi (343 bar)
Swing circuits	3,920 psi (270 bar)
Pilot pump	1 x gear design
Max. capacity	5.3 gpm (20 L/min)
Pilot system working pressure:	570 psi (39 bar)
Control valve w/ boom/arm holding valve:	
Right track travel, bucket, boom and arm acceleration.	1 x Four-spool section
Left track travel, auxiliary, swing, boom and arm acceleration.	1 x Five-spool section
Work mode selections	SP – Mode Power – Mode Eco – Mode Lift – Mode
Swing motor	Fixed displacement axial piston
Swing brake	Mechanical disc brake
Turn table bearing	Ball bearing type w/ internal gear
Swing final drive	Planetary gear reduction
Travel motor	Two-speed independent travel/axial piston

HYDRAULIC CYLINDERS

Boom cylinders	Two (2)
Cylinder bore	5.1 in (130 mm)
Cylinder rod diameter	3.5 in (90 mm)
Cylinder stroke	52.6 in (1 335 mm)
Arm cylinder	One (1)
Cylinder bore	5.9 in (150 mm)
Cylinder rod diameter	4.1 in (105 mm)
Cylinder stroke	68.4 in (1 737 mm)
Bucket cylinder	One (1)
Cylinder bore	37.4 in (95 mm)
Cylinder rod diameter	2.6 in (65 mm)
Cylinder stroke	34.6 in (881 mm)

SERVICE CAPACITIES

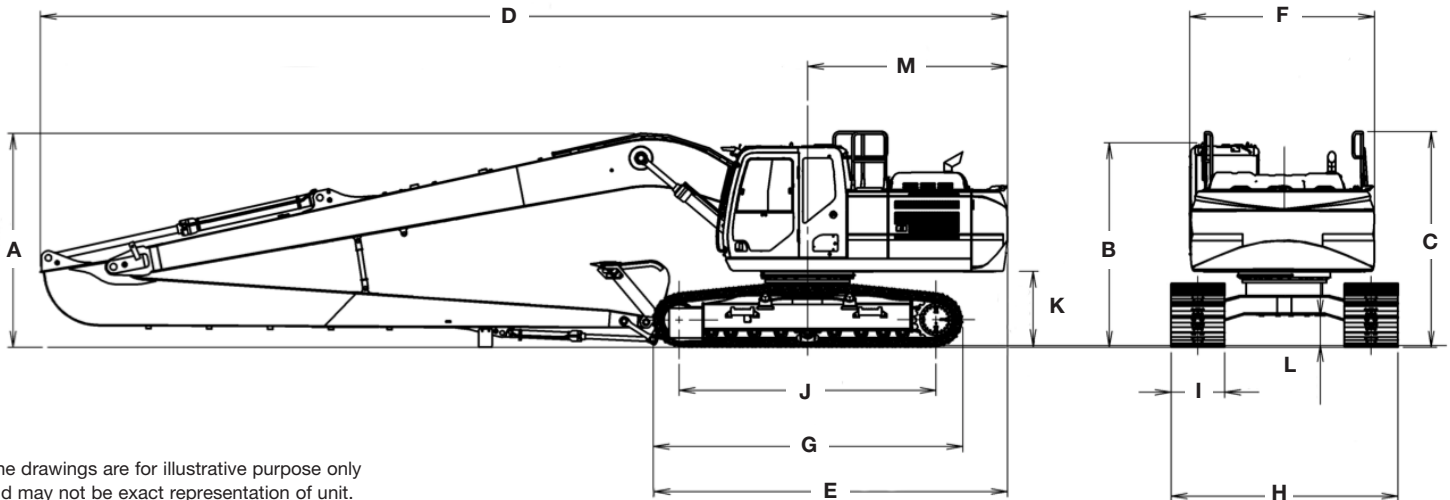
Fuel tank	108 gal (410.0 L)
Hydraulic system	77 gal (290 L)
Hydraulic Sump tank	43 gal (162 L)
Engine oil w/ filter	3.9 gal (14.6 L)
Swing drive	2.5 gal (9.6 L)
Final drive	1.3 gal (5.0 L)
Cooling system	7.9 gal (30.0 L)
DEF Tank	22 gal (84.0 L)

COOLING SYSTEM

Fan	f 25.6 in (650 mm) with 9-blades
Radiator capacity	66,640 kcal/h (77.5 kW)
Fin type	Corrugated fin (wavy type)
Fin space	0.069 in (1.75 mm)
Long life coolant	Coolant 55%, Water 45%
Oil cooler capacity	49,010 kcal/h (57.0 kW)
Fin type	Corrugated fin (wavy type)
Fin space	0.069 in (1.75 mm)
Intercooler capacity	15,910 kcal/h (18.5 kW)
Fin type	Corrugated fin (wavy type)
Fin space	0.069 in (1.75 mm)
Fuel cooler capacity	1,110 kcal/h (1.3 kW)
Fin type	Corrugated fin (wavy type)
Fin space	0.079 in (2.0 mm)
Filters:	
Suction filter	105 microns
Return filter	6 microns
Pilot line filter	8 microns

OTHER SPECIFICATIONS

Swing speed	5.8 RPM
Swing torque	51,600 lbf-ft (69 900 N-m)
Swing brake	Mechanical disc
Undercarriage:	
Length	15 ft 3 in (4 650 mm)
Track gauge	8 ft 6 in (2 590 mm)
Carrier rollers	2
Track rollers	9
Shoes – triple grouser	51
Shoe width – std.	31.5 in (800 mm)
Link pitch	7.5 in (190 mm)
Track:	
Chain	Grease lubricated/strutted
Guides	Single
Adjustment	Hydraulic

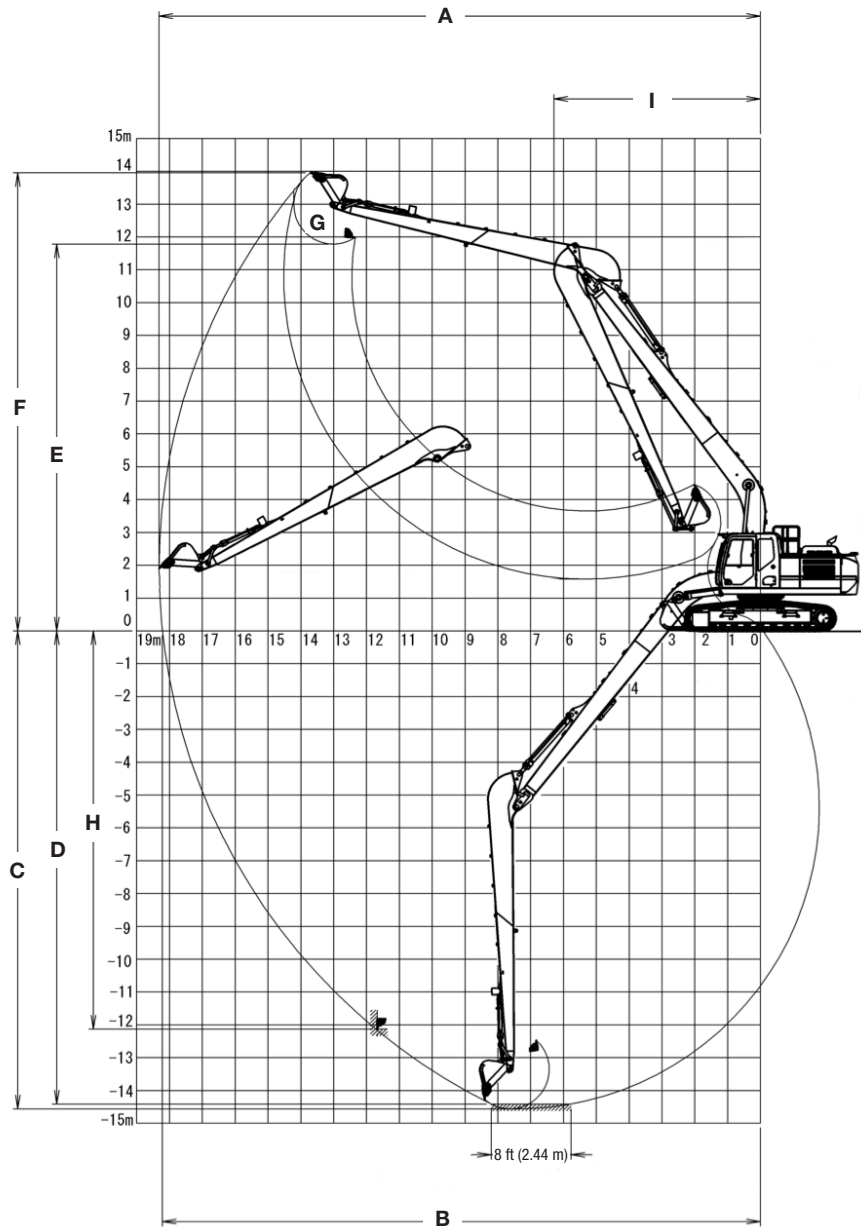


Line drawings are for illustrative purpose only and may not be exact representation of unit.

DIMENSIONS

	26 ft 3 in (8.00 m) Arm
A. Overall height – with attachment	10 ft 6 in (3 190 mm)
B. Cab height	10 ft 0 in (3 050 mm)
C. Overall height to top of guardrail	10 ft 7 in (3 220 mm)
D. Overall length – with attachment	47 ft 5 in (14 460 mm)
E. Overall length – without attachment	17 ft 5 in (5 310 mm)
F. Width of upper structure	9 ft 1 in (2 760 mm)
G. Track overall length	15 ft 3 in (4 650 mm)
H. Track overall width with 31.5 in (800 mm) shoes	11 ft 1 in (3 390 mm)
I. Track shoe width	31.5 in (800 mm)
J. Center to center – idler to sprocket	12 ft 7 in (3 840 mm)
K. Upper structure ground clearance	3 ft 8 in (1 110 mm)
L. Minimum ground clearance	1 ft 4 in (440 mm)
M. Rear tail swing radius	9 ft 10 in (2 990 mm)
Operating weight*	63,900 lb (29 000 kg)
Ground pressure	6.24 psi (0.43 bar)

NOTE: *With 33 ft 10 in (10.3 m) boom, 31.5 in (800 mm) track shoe, 752 lb (341 kg) bucket, 165 lb (75 kg) operator, full fuel and standard equipment.



PERFORMANCE SPECS

26 ft 3 in (8.00 m) Arm

A. Maximum dig radius	60 ft 1 in (18 320 mm)
B. Dig radius at groundline	59 ft 9 in (18 220 mm)
C. Maximum dig depth	47 ft 9 in (14 560 mm)
D. Dig depth – 8 ft 0 in (2.44 m) level bottom	47 ft 3 in (14 410 mm)
E. Dump height	38 ft 8 in (11 780 mm)
F. Maximum reach height	45 ft 9 in (13 950 mm)
G. Bucket rotation	178°
H. Maximum vertical wall dig depth	38 ft 8 in (11 780 mm)
I. Minimum swing radius	20 ft 8 in (6 290 mm)
Arm digging force: Standard	9,060 lbf (40 kN)
Bucket digging force: Standard	17,300 lbf (77 kN)

LIFT CAPACITIES

26 ft 3 in (8.00 m) Lift capacities using 10,360 lb (4 700 kg) counterweight.

Load (Lift Point Height)	MINIMUM REACH			5 ft (1.5 m)		10 ft (3 m)		15 ft (4.5 m)		20 ft (6 m)		25 ft (7.5 m)		30 ft (9 m)	
	@	END	SIDE	END	SIDE	END	SIDE	END	SIDE	END	SIDE	END	SIDE	END	SIDE
+40 ft (+12 m)	43 ft 4 in (13.23 m)	4,350 lb* (1 960 kg)*	4,350 lb* (1 960 kg)*												
+35 ft (10.5 m)	43 ft 8 in (13.32 m)	4,300 lb* (1 940 kg)*	4,300 lb* (1 940 kg)*												
+30 ft (9 m)	43 ft 2 in (13.12 m)	4,350 lb* (1 970 kg)*	4,350 lb* (1 970 kg)*												
+25 ft (7.5 m)	41 ft 7 in (12.62 m)	4,550 lb* (2 070 kg)*	4,550 lb* (2 070 kg)*												
+20 ft (6 m)	38 ft 9 in (11.74 m)	4,950 lb* (2 260 kg)*	4,950 lb* (2 260 kg)*												
+15 ft (4.5 m)	34 ft 0 in (10.28 m)	5,800 lb* (2 660 kg)*	5,800 lb* (2 660 kg)*												
+10 ft (3 m)	8 ft 5 in (2.58 m)	5,350 lb* (2 320 kg)*	5,350 lb* (2 320 kg)*			10,550 lb* (4 170 kg)*	10,550 lb* (4 170 kg)*					8,400 lb* (3 890 kg)*	8,400 lb* (3 890 kg)*	7,200 lb* (3 320 kg)*	7,200 lb* (3 320 kg)*
+5 ft (1.5 m)	9 ft 2 in (2.78 m)	2,250 lb* (1 010 kg)*	2,250 lb* (1 010 kg)*			3,100 lb* (1 320 kg)*	3,100 lb* (1 320 kg)*	11,250 lb* (4 770 kg)*	11,250 lb* (4 770 kg)*	12,750 lb* (5 910 kg)*	12,750 lb* (5 910 kg)*	9,900 lb* (4 570 kg)*	9,900 lb* (4 570 kg)*	8,200 lb* (3 780 kg)*	8,200 lb* (3 780 kg)*
Groundline	6 ft 8 in (2.03 m)	1,800 lb* (810 kg)*	1,800 lb* (810 kg)*			3,100 lb* (1 360 kg)*	3,100 lb* (1 360 kg)*	7,250 lb* (3 160 kg)*	7,250 lb* (3 160 kg)*	14,750 lb* (6 820 kg)*	13,250 lb* (6 130 kg)	11,200 lb* (5 190 kg)*	9,950 lb* (4 610 kg)	9,100 lb* (4 210 kg)*	7,800 lb* (3 620 kg)
-5 ft (-1.5 m)	1 ft 3 in (0.4 m)	3,050 lb* (1 370 kg)*	3,050 lb* (1 370 kg)*	2,800 lb* (1 270 kg)*	2,800 lb* (1 270 kg)*	3,950 lb* (1 760 kg)*	3,950 lb* (1 760 kg)*	6,850 lb* (3 020 kg)*	6,850 lb* (3 020 kg)*	12,200 lb* (5 730 kg)*	12,200 lb* (5 660 kg)	12,300 lb* (5 680 kg)*	9,200 lb* (4 260 kg)	9,950 lb* (4 580 kg)*	7,250 lb* (3 360 kg)
-10 ft (-3 m)	0 ft 0 in (0 m)	3,950 lb* (1 780 kg)*	3,950 lb* (1 780 kg)*	4,000 lb* (1 790 kg)*	4,000 lb* (1 790 kg)*	5,050 lb* (2 250 kg)*	5,050 lb* (2 250 kg)*	7,500 lb* (3 310 kg)*	7,500 lb* (3 310 kg)*	12,400 lb* (5 430 kg)*	11,600 lb* (5 390 kg)	13,050 lb* (6 030 kg)*	8,700 lb* (4 020 kg)	10,550 lb* (4 870 kg)*	6,850 lb* (3 170 kg)
-15 ft (-4.5 m)	0 ft 0 in (0 m)	4,900 lb* (2 200 kg)*	4,900 lb* (2 200 kg)*	5,200 lb* (2 330 kg)*	5,200 lb* (2 330 kg)*	6,300 lb* (2 800 kg)*	6,300 lb* (2 800 kg)*	8,550 lb* (3 790 kg)*	8,550 lb* (3 790 kg)*	12,950 lb* (5 680 kg)*	11,350 lb* (5 270 kg)	13,500 lb* (6 240 kg)*	8,400 lb* (3 890 kg)	10,450 lb* (4 860 kg)	6,600 lb* (3 050 kg)
-20 ft (-6 m)	0 ft 0 in (0 m)	5,950 lb* (2 670 kg)*	5,950 lb* (2 670 kg)*	6,450 lb* (2 880 kg)*	6,450 lb* (2 880 kg)*	7,650 lb* (3 410 kg)*	7,650 lb* (3 410 kg)*	9,950 lb* (4 400 kg)*	9,950 lb* (4 400 kg)*	14,250 lb* (6 260 kg)*	11,300 lb* (5 250 kg)	13,350 lb* (6 210 kg)	8,300 lb* (3 840 kg)	10,350 lb* (4 800 kg)	6,450 lb* (3 000 kg)
-25 ft (-7.5 m)	0 ft 0 in (0 m)	7,100 lb* (3 180 kg)*	7,100 lb* (3 180 kg)*	7,800 lb* (3 480 kg)*	7,800 lb* (3 480 kg)*	9,150 lb* (4 070 kg)*	9,150 lb* (4 070 kg)*	11,650 lb* (5 140 kg)*	11,650 lb* (5 140 kg)*	16,250 lb* (7 110 kg)*	11,450 lb* (5 310 kg)	13,450 lb* (6 230 kg)	8,350 lb* (3 860 kg)	10,350 lb* (4 800 kg)	6,450 lb* (3 000 kg)
-30 ft (-9 m)	1 ft 2 in (0.28 m)	8,500 lb* (3 780 kg)*	8,500 lb* (3 780 kg)*	9,250 lb* (4 120 kg)*	9,250 lb* (4 120 kg)*	10,850 lb* (4 830 kg)*	10,850 lb* (4 830 kg)*	13,700 lb* (6 050 kg)*	13,700 lb* (6 050 kg)*	16,200 lb* (7 510 kg)*	11,750 lb* (5 450 kg)	13,000 lb* (6 010 kg)*	8,500 lb* (3 940 kg)	10,500 lb* (4 860 kg)	6,600 lb* (3 050 kg)
-35 ft (-10.5 m)	4 ft 8 in (1.28 m)	10,750 lb* (4 740 kg)*	10,750 lb* (4 740 kg)*	10,850 lb* (4 830 kg)*	10,850 lb* (4 830 kg)*	12,850 lb* (5 690 kg)*	12,850 lb* (5 690 kg)*	16,350 lb* (7 170 kg)*	16,350 lb* (7 170 kg)*	14,800 lb* (6 900 kg)*	12,250 lb* (5 650 kg)	11,950 lb* (5 580 kg)*	8,850 lb* (4 090 kg)	9,850 lb* (4 610 kg)*	6,900 lb* (3 170 kg)
-40 ft (-12 m)	10 ft 8 in (2.95 m)	15,700 lb* (6 670 kg)*	15,700 lb* (6 670 kg)*			14,815 lb* (6 720 kg)*	14,815 lb* (6 720 kg)*	16,000 lb* (7 570 kg)*	16,000 lb* (7 570 kg)*	12,600 lb* (5 960 kg)*	12,600 lb* (5 960 kg)	10,200 lb* (4 840 kg)*	9,400 lb* (4 320 kg)	8,300 lb* (3 960 kg)*	7,350 lb* (3 370 kg)

Load (Lift Point Height)	35 ft (10.5 m)		40 ft (12 m)		45 ft (13.5 m)		50 ft (15 m)		55 ft (16.5 m)		MAXIMUM REACH		
	END	SIDE	END	SIDE	END	SIDE	END	SIDE	END	SIDE	@	END	SIDE
+40 ft (+12 m)					4,365 lb* (1 980 kg)*	4,365 lb* (1 980 kg)*					44 ft 9 in (13.79 m)	3,900 lb* (1 750 kg)*	3,900 lb* (1 750 kg)*
+35 ft (10.5 m)					4,300 lb* (1 950 kg)*	4,300 lb* (1 950 kg)*					48 ft 2 in (14.78 m)	3,800 lb* (1 710 kg)*	3,800 lb* (1 710 kg)*
+30 ft (9 m)					4,350 lb* (1 980 kg)*	4,350 lb* (1 980 kg)*	4,250 lb* (2 010 kg)*	4,250 lb* (2 010 kg)*			50 ft 10 in (15.56 m)	3,750 lb* (1 690 kg)*	3,750 lb* (1 690 kg)*
+25 ft (7.5 m)					4,500 lb* (2 050 kg)*	4,500 lb* (2 050 kg)*	4,500 lb* (2 050 kg)*	4,300 lb* (2 020 kg)			52 ft 11 in (16.17 m)	3,750 lb* (1 700 kg)*	3,750 lb* (1 690 kg)
+20 ft (6 m)			4,900 lb* (2 250 kg)*	4,900 lb* (2 250 kg)*	4,750 lb* (2 170 kg)*	4,750 lb* (2 170 kg)*	4,650 lb* (2 120 kg)*	4,200 lb* (1 960 kg)	4,079 lb* (1 850 kg)*	3,461 lb* (1 570 kg)	54 ft 5 in (16.61 m)	3,800 lb* (1 730 kg)*	3,400 lb* (1 540 kg)
+15 ft (4.5 m)	5,700 lb* (2 620 kg)*	5,700 lb* (2 620 kg)*	5,350 lb* (2 450 kg)*	5,350 lb* (2 450 kg)*	5,050 lb* (2 320 kg)*	5,000 lb* (2 320 kg)*	4,850 lb* (2 220 kg)*	4,050 lb* (1 890 kg)	4,250 lb* (2 170 kg)*	3,250 lb* (1 530 kg)	55 ft 6 in (16.92 m)	3,900 lb* (1 770 kg)*	3,200 lb* (1 440 kg)
+10 ft (3 m)	6,400 lb* (2 940 kg)*	6,400 lb* (2 940 kg)*	5,800 lb* (2 670 kg)*	5,800 lb* (2 670 kg)*	5,400 lb* (2 480 kg)*	4,750 lb* (2 210 kg)	5,100 lb* (2 340 kg)*	3,850 lb* (1 800 kg)	4,900 lb* (2 250 kg)*	3,150 lb* (1 470 kg)	56 ft 0 in (17.08 m)	4,050 lb* (1 840 kg)*	3,000 lb* (1 360 kg)
+5 ft (1.5 m)	7,100 lb* (3 260 kg)*	6,750 lb* (3 140 kg)	6,300 lb* (2 910 kg)*	5,450 lb* (2 540 kg)	5,800 lb* (2 650 kg)*	4,450 lb* (2 080 kg)	5,400 lb* (2 470 kg)*	3,650 lb* (1 710 kg)	4,800 lb* (2 230 kg)	3,000 lb* (1 410 kg)	56 ft 2 in (17.11 m)	4,250 lb* (1 930 kg)*	2,900 lb* (1 310 kg)
Groundline	7,750 lb* (3 580 kg)*	6,250 lb* (2 910 kg)	6,800 lb* (3 140 kg)*	5,100 lb* (2 380 kg)	6,150 lb* (2 830 kg)*	4,200 lb* (1 960 kg)	5,500 lb* (2 550 kg)	3,500 lb* (1 630 kg)	4,650 lb* (2 170 kg)	2,900 lb* (1 360 kg)	55 ft 10 in (17.01 m)	4,500 lb* (2 050 kg)*	2,800 lb* (1 280 kg)
-5 ft (-1.5 m)	8,350 lb* (3 860 kg)*	5,850 lb* (2 720 kg)	7,300 lb* (3 350 kg)*	4,800 lb* (2 240 kg)	6,250 lb* (2 910 kg)	4,000 lb* (1 860 kg)	5,300 lb* (2 480 kg)	3,350 lb* (1 560 kg)	4,550 lb* (2 130 kg)	2,800 lb* (1 310 kg)	55 ft 0 in (16.77 m)	4,550 lb* (2 070 kg)	2,800 lb* (1 280 kg)
-10 ft (-3 m)	8,700 lb* (4 030 kg)	5,550 lb* (2 570 kg)	7,200 lb* (3 350 kg)	4,600 lb* (2 130 kg)	6,100 lb* (2 830 kg)	3,850 lb* (1 780 kg)	5,200 lb* (2 420 kg)	3,250 lb* (1 510 kg)			53 ft 9 in (16.39 m)	4,650 lb* (2 120 kg)	2,850 lb* (1 300 kg)
-15 ft (-4.5 m)	8,450 lb* (3 930 kg)	5,350 lb* (2 480 kg)	7,050 lb* (3 270 kg)	4,400 lb* (2 050 kg)	5,950 lb* (2 770 kg)	3,700 lb* (1 730 kg)	5,150 lb* (2 390 kg)	3,150 lb* (1 470 kg)			51 ft 11 in (15.87 m)	4,850 lb* (2 210 kg)	3,000 lb* (1 350 kg)
-20 ft (-6 m)	8,350 lb* (3 880 kg)	5,250 lb* (2 430 kg)	6,950 lb* (3 230 kg)	4,350 lb* (2 020 kg)	5,950 lb* (2 750 kg)	3,700 lb* (1 710 kg)	5,247 lb* (2 380 kg)	3,241 lb* (1 470 kg)			49 ft 7 in (15.17 m)	5,200 lb* (2 350 kg)	3,200 lb* (1 450 kg)
-25 ft (-7.5 m)	8,350 lb* (3 870 kg)	5,250 lb* (2 420 kg)	7,000 lb* (3 230 kg)	4,350 lb* (2 020 kg)	6,000 lb* (2 760 kg)	3,750 lb* (1 720 kg)					46 ft 7 in (14.28 m)	5,700 lb* (2 570 kg)	3,550 lb* (1 600 kg)
-30 ft (-9 m)	8,500 lb* (3 920 kg)	5,350 lb* (2 470 kg)	7,100 lb* (3 280 kg)	4,500 lb* (2 070 kg)							42 ft 10 in (13.16 m)	6,550 lb* (2 920 kg)	4,150 lb* (1 840 kg)
-35 ft (-10.5 m)	8,200 lb* (3 850 kg)*	5,600 lb* (2 580 kg)									38 ft 0 in (11.75 m)	7,300 lb* (3 290 kg)*	5,050 lb* (2 240 kg)
-40 ft (-12 m)											31 ft 7 in (9.91 m)	7,700 lb* (3 480 kg)*	6,900 lb* (2 980 kg)

NOTE: *Following number indicates hydraulic capacity

STANDARD EQUIPMENT

ENGINE

FPT NEF6
Tier 4 Final/Stage V Certified
Selective Catalytic Reduction
on Filter – SCRoF
Six-cylinder turbo-charged diesel
Fixed geometry turbocharger
High pressure common rail
system - electronic
Neutral safety start
Auto-engine warm up
Air intake heater
Fuel Economy Assist System – FEA
Engine Protection Feature – EPF
Dual-stage fuel filtration
Dual element air filter
Remote oil filter
Drain for fuel tank
1,000-hour engine oil/filter interval
24-volt system
Engine oil sample port
Battery disconnect switch
Emergency engine stop
External Fuel and DEF gauges
Fan housing
Fuel cooler
Fuel filter restriction indicator
Fuel shut-off valve
Radiator, oil cooler,
intercooler – protective chaff screen

FUEL ECONOMY SYSTEMS

Engine Idle/Fuel Economy System:
Auto-idle
One-touch idle
Timed engine shut down
BEC – Boom Economy Control
AEC – Auto Economy Control
SWC – Swing Relief Control
SSC – Spool Stroke Control

HYDRAULIC CONTROLS

Boom/Arm/Bucket/Swing:
Pilot pressure control system
(ISO or SAE control pattern)
Work mode select:
1 SP – mode
2 Power – mode
3 Eco – mode
4 Lift – mode
Travel mode select – 2-speed travel with
auto downshift
Attachment cushion control
Hydraulic lock – gate lock, left side tilt console
Single pedal travel
Custom flow balance adjustment:
Arm in vs. boom up
Arm in vs. swing
Multi-function with electronic pressure
and flow control/joystick activated
with electronic configurable
proportional controls

UPPER STRUCTURE

ISO mirrors – 3
Cab ISO-Mounts – fluid and spring
Upper mounted work light – 70 watt
Swivel guard belly pan
Center cover – over main CV
Fuel tank belly pan
Handrail – RH access
ISO guard rails
Lifting eyes for counterweight
Lockable fuel cap, service doors and tool box

ATTACHMENTS

Boom – 33 ft 10 in (10.3 m)
Arm – 26 ft 3 in (8.00 m)
Heavy-duty bucket linkage
Boom mounted work light – 70 watt
Auxiliary pipe brackets
Centralized grease fittings
Attachment cushion valve
Arm and boom regeneration
Bucket anti-clatter device
Chrome pins
Easy Maintenance System (EMS)

OPERATOR ENVIRONMENT

Operators cab:
Smooth and round shape design cab
Safety glass for all windows
Shock-less cab suspension by 4-point
fluid mounting
Sliding front window with auto lock
10 in Full-color LCD monitor display
Membrane switch on monitor display with
5 configurable button on bottom
of monitor
Switch panel – including throttle dial with
eco-mode switch
Windshield wiper & washer
AM/FM/Bluetooth Radio with
hands-free phone
Sectioned floor mat
Polycarbonate roof hatch & Sun shade
Auto climate control
Roll-over protective structure – ROPS
Top guard OPG level 1 – in cab structure
Operator's seat:
Low frequency air suspension with
air springs and double acting
hydraulic damper.
With following features:
Manual weight adjustment
Backrest angle adjustment
Seat height adjustment
Adjustable armrest – Angle and height
Adjustable headrest
Retractable seat belt
Adjustable lumbar support
Console mount on suspension
Control consoles adjust
independently of seat
Others:
Rear view mirror – Cab side & Right side
Rear & Right-side view Camera

UNDERCARRIAGE

Travel motor	Variable displacement axial piston motor
Brake	Mechanical disc brake
Hydraulic service brake	Brake valve
Final drive	Planetary gear reduction
Travel speeds:	
High	3.4 mph (5.5 km/h) (Automatic travel speed downshifting)
Low	2.2 mph (3.5 km/h)
Drawbar pull	44,700 lbf (199 kN)
Number of carrier rollers	2 – each side
Number of track rollers	9 – each side
Number of shoes	51 – each side
Type of shoe	Triple semi-grouser shoe
Link pitch	7.48 in (190 mm)
Width of shoe	31.5 in (800 mm) S.T.D
Grade-ability	70% (35°)

TELEMATICS

CASE SiteWatch™ Telematics – includes
hardware and a 3-yr Advanced
data subscription for 2-way communication

MASS

Operating mass	63,900 lb (29 000 kg) with 26 ft 3 in (8.00 m) Arm, 0.37 m ³ Bucket, 31.5 in (800 mm) grouser shoe, operator, lubricant, coolant, full fuel tank
Shipping mass	62,400 lb (28 300 kg) Operating mass – (operator mass (75 kg) + full fuel mass + bucket mass (341 kg) + shipping fuel mass
Counterweight mass	16,200 lb (7 350 kg)
Ground pressure	6.24 psi (0.043 MPa) with 26 ft 3 in (8.00 m) Arm, 0.37 m ³ Bucket, 31.5 in (800 mm) grouser shoe

ELECTRICAL SYSTEM

Engine control:
Dial type throttle control
One touch idle/Auto deceleration/timed
engine shutdown system
Monitor system:
Message display
Work mode display
Machine condition
Alarm display and buzzer
Water temperature
Hydraulic oil temperature
Fuel level
Diagnosis system
Rear & Right-side view camera image
Urea water level
Wire harness
Travel alarm
Double horn
Battery
Lights
Working light
Upper 24 V 70 W x1
Boom 24 V 70 W x1
Cab 24 V 70 W x2
Operator's cab room 24 V 10 W x1

OPTIONAL EQUIPMENT

ENGINE

Refueling pump
Air pre-cleaner – Cyclone
High ambient temperature cooling package

HYDRAULICS

Auxiliary hydraulics:
Proportionally controlled secondary
low-flow auxiliary hydraulics
Hose Burst Check Valve – HBCV

MACHINE CONTROL

Leica iCON iXE2 – 2D System
Leica iCON iXE3 – 3D System

ATTACHMENTS

Quick coupler/Case multi-pin grabber
Tools:
Heavy-duty/Extreme-duty/Ditching Buckets

UPPER STRUCTURE

Rubber bumper guard – order through
Service Parts

UNDERCARRIAGE

35.4 in (900 mm) steel shoes,
triple semi-grouser
Track guides – triple

OPERATOR ENVIRONMENT

FOPS cab top guard – Level 2
Front grill guard – 2 x 2 in (50.8 x 50.8 mm)
screen mesh
Front rock guard – vertical bars
Two piece/OPG 1
Front rock guard – vertical bars
One piece/OPG 2
Vandal guard (front window) with common key
Rain deflector – not available with front guards
Sun visor
Max View Monitor – 3 cameras with
270-degree view
LED Package:
Includes 6 LED Lights – 2 front cab
mounted, 2 rear mounted and 1 mounted
on each side

CaseCE.com

©2022 CNH Industrial America LLC. All rights reserved. CASE is a trademark registered in the United States and many other countries, owned by or licensed to CNH Industrial N.V., its subsidiaries or affiliates. CNH Industrial Capital is a trademark in the United States and many other countries, owned by or licensed to CNH Industrial N.V., its subsidiaries or affiliates. Printed in U.S.A. Contains 10% post-consumer fiber.

IMPORTANT: CASE Construction Equipment Inc. reserves the right to change these specifications without notice and without incurring any obligation relating to such change. Availability of some models and equipment builds vary according to the country in which the equipment is used. The illustrations and text may include optional equipment and accessories and may not include all standard equipment. Your CASE dealer/distributor will be able to give you details of the products and their specifications available in your area.



CASE Construction Equipment is biodiesel-friendly. NOTE: All engines meet current EPA emissions regulations. All specifications are stated in accordance with SAE Standards or Recommended Practices, where applicable.



Always read the Operator's Manual before operating any equipment. Inspect equipment before using it, and be sure it is operating properly. Follow the product safety signs and use any safety features provided.

Form No. CCE202210CX260ELR

CX260E LR

6 of 6