

521G | 621G | 651G | 721G | 821G | 921G | 1021G | 1121G

SING

LARGE WHEEL LOADERS



GETTING THE JOB DONE, CASE AFTER CASE.



Every day, the case for CASE Construction Equipment grows stronger—from delivering smart solutions for tough on-site challenges to providing the next generation of builders the tools needed to succeed. CASE machines are backed by more than 180 years of grit, sweat and get-the-job-done efficiency. That no-nonsense attitude extends to our team, too: with over 300 North American dealer locations, a pipeline of inventors and engineers who will stop at nothing to create swift, smooth machines, service technicians who offer fix-it-right the first time service and an expansive parts inventory available at your fingertips, we're serious about offering steadfast sales, service and support as your construction equipment partner.

CASE kicked off its wheel loader legacy in 1958 with the rugged W9, paving the way for the powerhouse W26 in 1968. The bold 21 Series followed in 1987, turning heads with its rear-mounted cab and tough-as-nails build. Fast forward to today and the sleek G Series leads the pack with cutting-edge tech, operator-first comfort and a modern, performance-driven look.

LARGE WHEEL LOADERS

02 CASE Story

03 Large Wheel Loader Overview

04 Features & Benefits

06 Specifications

11 Attachments

12 Value of Support



FOR JOBS THAT NEED A LITTLE EXTRA BACKUP.

Got a big pile and a tight deadline? CASE G Series wheel loaders are ready to smash them both. These mountain-devouring machines combine easy operation, huge muscle and near-endless uptime to turn huge workloads into easy profits. Spacious cabs keep you comfortable and in charge with intuitive controls, while a trip below the hood reveals the kind of engine and hydraulic efficiencies operators can rely on. And easy-to-use tech keeps you smoothly delivering bigger payloads with greater accuracy all day long. Put simply, these straightforward, strong and reliable loaders bust through anything in their way—just point them at your next job and see for yourself.



THE GUTS TO GET THE JOB DONE.



1 A GATEWAY TO MORE.

A simple 8-in touchscreen display simplifies operations, serving as a gateway to all kinds of features—operational data, a rearview camera, rear object detection system, you name it.

2 DIAL IN YOUR SETUP.

Color-coded configurable armrest buttons let you set up your machine any way you like. Get one-push access to your rearview camera, the optional integrated payload system and more.

3 A MEATIER MOUNTAIN-MOVER.

The CASE G Series wheel loader lineup includes some fresh faces—including the 651G—which offers an increased hinge pin height, larger hydraulic pump, higher operating weight and greater lifting capacity.

4 WEIGHT, MEET COUNTERWEIGHT.

CASE 821G and 921G material handlers now offer heavier counterweights over their standard counterparts, increasing operating weights on both machines by over 2,300 lb.

5 PICK YOUR POWER MODE.

Choose from Max or Smart power modes. Max gives you all-out power, while Smart delivers smoother shifting, less tire wear and top-notch fuel efficiency.



6 A PERFECT PERFORMANCE PAIRING.

Increase machine balance and lift capacities with rear-mounted engines, slash fuel consumption with Engine Idle Shutdown timers and haul more quickly with curved-side buckets that increase material retention.

7 AN INTEGRATED PAYLOAD SYSTEM.

Add customers, trucks and materials to the optional integrated payload system interface, set target loads and monitor progress for more efficient loading operations.

8 LOADS OF COMFORT.

CASE G Series wheel loaders feature a redesigned HVAC system, more operator seat and control adjustability and EH controls that let operators comfortably do more from within the cab.

9 SIMPLE, SMOOTH CONTROLS.

Control features allow operators to choose Lift and Tilt responsiveness levels, lock in engine RPM for long travel periods, engage Automatic Ride Control—down to 1 mph—and more.

10 LESS MAINTENANCE, MORE UPTIME.

Ground-level service points and an electric rear hood lift* offer tool-free access to the engine and other key components for lightning-fast serviceability.

*Does not apply to all models, ask your dealer for more information.



BUILT TO SPEC.



SPECIFICATION	521G	621G	651G	721G
Engine	F4HFE413Z*V005	F4HFE613W	F4HFE613W*B007	F4HFE613T*B009
Emissions Certification	Tier 4 Final	Tier 4 Final	Tier 4 Final	Tier 4 Final
Displacement – in³ (L)	275 (4.5)	411 (6.7)	411 (6.7)	411 (6.7)
Cylinders	4-cylinder in-line	6-cylinder in-line	6-cylinder in-line	6-cylinder in-line
Peak Gross Horsepower – hp (kW)	142 (106)	172 (128)	172 (128)	195 (145)
Peak Net Torque – lb ft (Nm)	432 (586)	510 (692)	510 (692)	674 (914)
Operating Weight – lb (kg)	24,203 (10 978)	28,159 (12 773)	30,890 (14 012)	36,011 (16 334)
Breakout Force w/ Tilt Cylinder (Z-Bar Linkage) – lb (kg)	20,934 (9 495)	24,031 (10 900)	23,984 (10 879)	32,107 (14 563)
Full Turn Tipping Load, ISO Deflected Tires – lb (kg)	16,159 (7 330)	19,266 (8 739)	20,942 (9 499)	24,381 (11 059)
Transmission Gears	4F/3R	4 or 5F/3R	5F/3R	4 or 5F/3R
Pin-on Bucket Size: GP w/ Bolt-on-Edge – yd³ (m³)	2-2.5 yd³ (1.5–1.9 m³)	2.5-3 yd³ (1.9–2.3 m³)	3-3.5 yd³ (2.3–2.7 m³)	3-3.5 yd³ (2.3–2.7 m³)
Maximum Travel Speed (mph / kph)	22.3 / 35.9	24 / 38.6	24 / 38.6	23.5 / 37.8
DIMENSIONS	521G	621G	651G	721G
Hinge Pin Height (Z-Bar Linkage) – in (mm)	142.0 (3 606)	150.9 (3 833)	155.0 (3 938)	160.5 (4 077)
Hinge Pin Height (XR Linkage) – in (mm)	156.9 (3 985)	167.6 (4 258)	171.7 (4 362)	176.2 (4 475)
Bucket Reach – Fully Raised, 45° dump (Z-Bar Linkage) – in (mm)	37.9 (962)	39.8 (1 010)	35.0 (890)	41.8 (1 062)
Overall Width w/o Bucket – in (mm)	96.4 (2 448)	97.6 (2 478)	97.6 (2 478)	100.7 (2 558)
Overall Height to Top of ROPS Cab – in (mm)	128.9 (3 275)	133.2 (3 384)	133.2 (3 384)	133.0 (3 378)
Overall Length - Bucket Level on Ground (Z-Bar Linkage) – in (mm)	260.3 (6 612)	290.6 (7 380)	290.7 (7 383)	304.1 (7 724)
Wheelbase – in (mm)	108.3 (2 750)	114.2 (2 900)	114.2 (2 900)	128.1 (3 253)
Ground Clearance – in (mm)	13.4 (341)	15.3 (389)	15.3 (389)	15.1 (384)
Angle of Departure – degrees	30	25	25	29
Turning Radius – Outside – in (mm)	196.9 (5 002)	205.6 (5 223)	205.6 (5 223)	226.3 (5 748)

*DOC = Diesel Oxidation Catalyst, SCR = Selective Catalytic Reduction.

MADE TO LAST.



SPECIFICATION	821G	921G	1021G	1121G
Engine	F4HFE613S*B005	F4HFE613R*B011	F2CFE614M*V002	F2CFE614L*V002
Emissions Certification	Tier 4 Final	Tier 4 Final	Tier 4 Final	Tier 4 Final
Displacement – in³ (L)	411 (6.7)	411 (6.7)	531 (8.7)	531 (8.7)
Cylinders	6-cylinder in-line	6-cylinder in-line	6-cylinder in-line	6-cylinder in-line
Peak Gross Horsepower – hp (kW)	230 (172)	255 (190)	318 (237)	345 (257)
Peak Net Torque – lb ft (Nm)	845 (1 145)	930 (1 261)	1,058 (1 434)	1,149 (1 558)
Operating Weight – lb (kg)	42,414 (19 239)	45,070 (20 443)	56,365 (25 567)	61,650 (27 964)
Breakout Force w/ Tilt Cylinder (Z-Bar Linkage) – lb (kg)	32,145 (14 581)	37,618 (17 063)	45,056 (20 437)	49,934 (22 650)
Full Turn Tipping Load, ISO Deflected Tires – lb (kg)	24,913 (11 300)	28,492 (12 924)	35,717 (16 201)	38,454 (17 443)
Transmission Gears	4 or 5F/3R	4 or 5F/3R	4F/3R	4F/3R
Pin-on Bucket Size: GP w/ Bolt-on-Edge – yd³ (m³)	4-4.5-4.75 yd³ (3.1–3.4–3.6 m³)	4-4.75 yd³ (3–3.6 m³)	5.5 yd³ (4.2 m³)	6.25 yd³ (4.7 m³)
Maximum Travel Speed (mph / kph)	22.8 / 36.6	22.4 / 36	22 / 35.4	23.2 / 37.4
DIMENSIONS	821G	921G	1021G	1121G
Hinge Pin Height (Z-Bar Linkage) – in (mm)	162.1 (4 116)	165.4 (4 201)	167.2 (4 246)	175.2 (4 449)
Hinge Pin Height (XR Linkage) – in (mm)	179.4 (4 558)	182.9 (4 647)	190.0 (4 827)	191.6 (4 867)
Bucket Reach – Fully Raised, 45° dump (Z-Bar Linkage) – in (mm)	46.8 (1 189)	43.6 (1 108)	49.8 (1 265)	50.1 (1 273)
Overall Width w/o Bucket – in (mm)	111.4 (2 829)	111.4 (2 829)	117.2 (2 978)	117.2 (2 978)
Overall Height to Top of ROPS Cab – in (mm)	136.2 (3 460)	136.4 (3 464)	140.8 (3 577)	140.8 (3 576)
Overall Length - Bucket Level on Ground (Z-Bar Linkage) – in (mm)	319.7 (8 120)	322.7 (8 198)	352.3 (8 948)	361.1 (9 172)
Wheelbase – in (mm)	131.5 (3 340)	131.5 (3 340)	139.8 (3 550)	139.8 (3 550)
Ground Clearance – in (mm)	17.0 (431)	17.1 (435)	17.2 (437)	17.2 (437)
Angle of Departure – degrees	29	29	23	23
Turning Radius – Outside – in (mm)	236.3 (6 003)	236.3 (6 003)	250.6 (6 366)	250.6 (6 366)

*DOC = Diesel Oxidation Catalyst, SCR = Selective Catalytic Reduction.

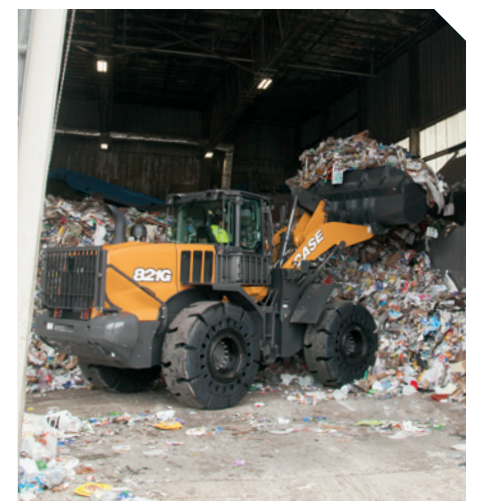
THE RIGHT MACHINE. NO COMPROMISES.

SPECIFICATIONS	521G	621G	651G	721G	821G	921G	1021G	1121G
Z-Bar Linkage	●	●	●	●	●	●	●	●
XR Extended Reach Linkage	○	○	○	○	○	○	○	○
Parallel Lift XT Linkage	○	○	○	○	—	—	—	—
Hydraulic Provision for Front Coupler	●	●	●	●	●	●	●	●
JRB Compatible Coupler	○	○	○	○	○	○	○	○
Heavy Counterweight	●	●	●	●	●	●	○	○
Standard Counterweight	—	—	—	—	—	—	●	●
Articulated Power Steering w/ Tilt Column	●	●	●	●	●	●	●	●
Joystick Steering	○	○	○	○	○	○	○	○
Loader Joystick Control	○	○	○	○	○	●	●	●
Loader Joystick Control w/ 1 AUX Function	●	●	●	●	●	○	○	○
Loader 2 Lever Control w/ 1 AUX Function	○	○	○	○	○	○	○	○
Loader Joystick Control w/ 2 AUX Function	○	○	○	○	○	○	○	○
Rops Cab w/ Heater and A/C	●	●	●	●	●	●	●	●
8 in LCD Touchscreen Display	●	●	●	●	●	●	●	●
Rearview Camera	○	○	○	○	○	○	○	○
AM/FM/Bluetooth® Radio	○	○	○	○	○	●	●	●
Fully Adjustable, Heated, Air Suspension Cloth Seat	●	●	●	●	●	●	●	●
Fully Adjustable, Heated, Air Suspension Premium Leather Seat	—	—	—	—	—	○	○	○
Exterior Seat Belt Indicator	○	○	○	○	○	○	○	○
Integrated Payload System	○	○	○	○	○	●	●	●
Autodig/Autodump	●	●	●	●	●	●	●	●
2 LED Stop and Tail Lights	●	—	—	—	—	—	●	●
2 LED Stop/Tail Lights w/ Integrated Turn Signals	—	●	●	●	●	●	—	—
Front Halogen Driving/Headlights	●	●	●	●	●	●	—	—
Front LED Driving/Headlights w/ Heated Lens	○	○	○	○	○	○	●	●
Led Beacon Light	●	○	○	○	○	○	●	●
Integrated 4-Corner Strobe Lights	—	●	●	●	●	●	—	—
Cold Weather Package	○	○	○	○	○	○	○	○

SPECIFICATIONS	521G	621G	651G	721G	821G	921G	1021G	1121G
4-Speed Torque Converter Transmission	●	●	○	●	●	●	●	●
5-Speed Lock Up Torque Converter Transmission	—	○	●	○	○	○	—	—
CVT (Continuously Variable Transmission)	—	—	—	—	—	—	○	○
Standard Duty Axles (Limited Slip Front & Rear)	●	●	—	—	—	—	—	—
Heavy Duty Axles (Limited Slip Front & Rear)	○	○	●	●	●	○	—	—
Heavy Duty Axles (Diff Lock Front & Open Rear)	○	○	○	○	○	●	—	—
Heavy Duty Axles (Diff Lock Front & Limited Slip Rear)	○	○	○	○	○	—	—	—
Standard Duty Axles w/ Axle Cooling (Diff Lock Front & Open Rear)	—	—	—	—	—	—	○	○
Heavy Duty Axles w/ Axle Cooling (Diff Lock Front & Open Rear)	—	—	—	—	—	—	●	●
Powered Open & Close Rear Hood	—	●	●	●	●	●	●	●
Standard Debris Cooling System w/ Reversing Fan	●	●	●	●	●	●	●	●
Heavy Debris Cooling System w/ Reversing Fan	—	○	○	○	—	—	—	—
Full Fenders	○	○	○	○	○	○	○	○
Tire Pressure Monitor System	○	○	○	○	○	○	○	○
White Noise Backup Alarm	○	○	○	○	○	○	○	○
Rear Object Detection	○	○	○	○	○	○	○	○
Central Automatic Greasing System	○	○	—	○	○	—	○	○
Ride Control Boom Suspension	●	●	●	●	●	●	●	●
Diagnostic Quick Couplers	●	●	●	●	●	●	●	●
Automatic Shutdown – Idle Reduction Device	●	●	●	●	●	●	●	●
Advanced Telematics Connectivity & Remote Service Tool	●	●	●	●	●	●	●	●
CASE ProCare Full Machine Protection	●	●	●	●	●	●	●	●

GO AHEAD. GET ATTACHED.

The right attachment means you're never stuck sitting on the sidelines. Easily swap out attachments on your CASE G Series wheel loader and turn it into an entire fleet of performance-enhancing possibilities—from handling logs to moving dirt to loading specialty materials, it can tackle the tough stuff. So go ahead—configure your loader just how you need it, when you need it, to turn it into the most versatile and profitable powerhouse on the jobsite.



Angle Broom



Jib Boom



Sectional Snow Push



Construction Utility Forks



See our full line at
**CASECE.COM/
ATTACHMENTS**



● Standard ○ Optional — Not Applicable EH Electrohydraulic

NO ONE OUTWORKS US.

The customer doesn't just come first — you're at the center of everything we do. Your local CASE specialists are ready to help you do more of everything you do best: maximizing production, cutting costs and improving safety through a variety of services and technology.



Base & Extended Limited Warranty Coverage.*

- > 1-year/Unlimited-hour full-coverage base limited warranty
- > 2-year/2,000-hour extended limited engine warranty. Discuss the extended warranty coverage details with your dealer.



Tech that Delivers.

Command Your Fleet with Telematics

CASE Telematics puts real-time data in your hands. Track location, monitor working status and anticipate maintenance needs across your entire fleet — helping you turn good data into good decisions.

Precision Machine Control that Pays for Itself

SiteControl machine control solutions don't just improve accuracy — they transform profitability. Up your efficiency, productivity and profits anywhere the job takes you.

*See your CASE dealer for limitations, exclusions and confirmation of policies in effect. Engine/EV Batteries warranty coverage provided through CASE. Second year machine warranty coverage applies after base warranty expires.



CNH CAPITAL Performance Equipment Demands Performance Financing.

From protection plans to customized leasing packages, our financial solutions through CNH Capital are engineered for businesses that don't have time for downtime.



Local Support. National Strength.

We back tough equipment with even tougher support. With over 300 dealer locations across North America, CASE delivers the right equipment, financing solutions and after-sale support to keep your business moving forward. That's the kind of boots-on-the-ground business support you can expect — and rely on — from CASE.



Protect Your Investment.

PlusCare

Choose service options that match how hard you work. CASE PlusCare protects your equipment investment with customizable maintenance support tailored to your operation's demands. [Scan QR code for more information >](#)



Planned Maintenance Agreements (PMAs)

Get clear and detailed maintenance plans that maximize performance while driving down operating costs, allowing you to focus on what matters — building your business.

Purchased Protection Plan (PPP)

Get protection beyond the base warranty period for both new and used CASE equipment, with flexible payment options and customizable terms through CNH Capital.

▶▶▶ COUNTLESS SOLUTIONS



Mini Track Loaders



Skid Steer Loaders



Compact Track Loaders



Compact Dozer Loaders



Mini Excavators



Midi Excavators



Small Articulated Loaders



Compact Wheel Loaders



Electric Vehicles



Backhoe Loaders



Tractor Loaders



Rough Terrain Forklifts



Dozers



Large Wheel Loaders



Motor Graders



Wheeled Excavators



Large Excavators

NO ONE WILL OUTWORK US.™



©2025 CNH Industrial America LLC. All rights reserved. CASE and CNH Industrial are trademarks registered in the United States and many other countries, owned by or licensed to CNH Industrial N.V., its subsidiaries or affiliates. Any trademarks referred to herein, in association with goods and/or services of companies other than CNH Industrial America LLC., are the property of those respective companies.

Form No CCE202509WL
Replaces Form No. CCE202104WL

IMPORTANT: CASE Construction Equipment Inc. reserves the right to change these specifications without notice and without incurring any obligation relating to such change. Availability of some models and equipment builds vary according to the country in which the equipment is used. The illustrations and text may include optional equipment and accessories and may not include all standard equipment. Your CASE dealer/distributor will be able to give you details of the products and their specifications available in your area.

CASE Construction Equipment is biodiesel-friendly.

NOTE: All engines meet current EPA emissions regulations. All specifications are stated in accordance with SAE Standards or Recommended Practices, where applicable.

Always read the Operator's Manual before operating equipment. Inspect equipment before using it, and be sure it is operating properly. Follow the product safety signs and use any safety features provided.