

CX12D | CX19D | CX30D | CX34D | CX38D | CX42D | CX50D | CX60D | CX15EV | CX25EV | CX85E | CX90E

MINI & MIDI EXCAVATORS



CASE
CONSTRUCTION

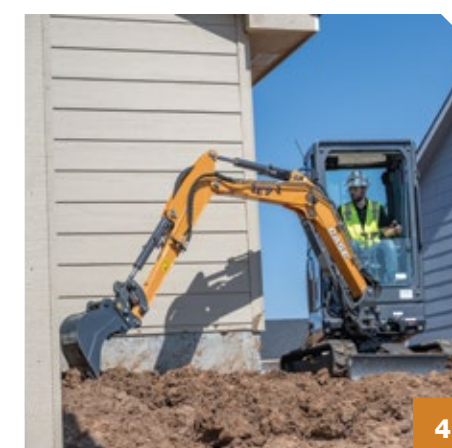
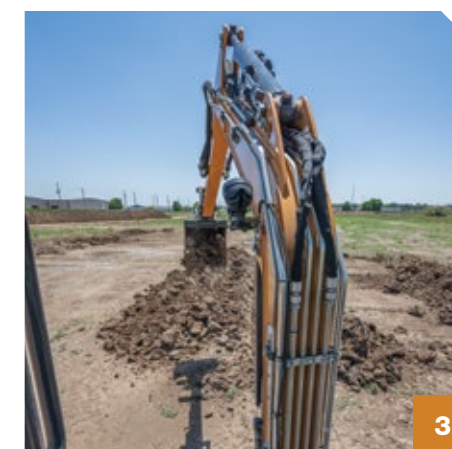
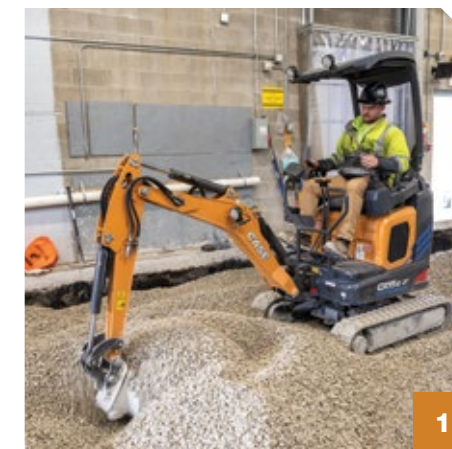
MINI EX. MIGHTY RESULTS.

Built to punch above their weight, CASE mini excavators deliver dirt-dominating performance in a nimble package — small enough to trailer between jobs and strong enough to tackle even the most demanding applications. They're the perfect tool for expanding your contracting capabilities. From the tried-and-true controls and comfort of CASE C Series mini excavators to the big benefits of our D Series lineup, these machines don't just dig up gold — they unearth new possibilities.



MINI EX-ELECTRIC.

Thinking of supercharging your operation? From the CX15EV to the CX25EV, our electric mini excavators offer solutions to help you tackle unique jobsite demands and grow your business.



1 WORK ON ANYTHING, ANYWHERE.

Zero emissions and low noise make electric minis the perfect tool for urban contracts, high-traffic jobs and indoor work where clear communication with other operators is key.

2 LESS MAINTENANCE.

No diesel, no engine oil, no emissions — that all adds up to lower maintenance costs, easier serviceability and less downtime.

3 ATTACHED TO GETTING WORK DONE.

Standard auxiliary hydraulics and an optional second auxiliary circuit — plus the power to set and save flow settings — give you the tools to adapt to any contract.

4 RIGHT-SIZE YOUR WORK.

Choose the small and flexible CX15EV electric mini excavator for easy transportation and maneuverability, or opt for the CX25EV electric mini excavator for additional power.

DIGS LIKE THE BIG GUYS.

Our huge lineup of mini excavators means we've got machines to tackle commercial construction, residential work, utilities, landscaping — you name it. What do you dig most?



1 TACKLE TIGHT SPACES.

Swing boom helps you dig close to foundations, buildings, roads and obstacles, while zero tailswing lets you work confidently against walls and in tight spaces.

2 TAILORED PERFORMANCE.

Up to 4 working modes — Power, Standard, Economy and User Specific — let you dial in engine throttle and rpm depending on the job.

3 MINI EX, MAX COMFORT.

Revamped cabs with ergonomic controls and broad visibility keep you comfortable all day.

4 MAX COMFORT, MAX PRODUCTIVITY.

Full heating and air conditioning, Bluetooth® radio and LCD display options on select machines let you tailor your in-cab experience for maximum on-the-job efficiency.

5 BIG REACH.

All CASE mini excavators offer an optional long arm for extended reach — but with the CASE CX60D, that advantage comes standard, giving you greater digging depth and versatility right from the start.



6 JOBSITE FORESIGHT.

Rear view camera* and LED work light options, plus an unlocking, stowable front window on CASE D Series mini excavators give you more convenience and clarity.

7 ALWAYS ON THE GO.

A trailer-friendly operating weight means you can easily tow** your mini to whatever job is next.

8 PRECISE CONTROL.

Proportional thumb-roller controls, simple switching between SAE and ISO control patterns and 1- or 2-way flow combination auxiliary hydraulics offer job-crushing attachment precision.

9 EASY MAINTENANCE.

Wide-open swing-out access panels, grouped ground-level service checkpoints, wide engine compartments and tilting cabs* make maintenance a cinch — just open up, tune up and suit back up.

*Model dependent.
**Understand local regulations.

MIDI OR NOT, HERE WE DIG.

When the job demands more muscle without sacrificing versatility, CASE midi excavators have you covered. Check out how these powerhouses bring impressive capabilities to confined spaces.



1 NEW BOOM OPPORTUNITIES.

The newest model in our midi lineup, the CX85E, comes with a fixed boom — great for heavy lifting and keeping front visibility at a premium with enhanced machine balance. The CX90E is our largest swing boom excavator, giving you more reach and dig depth.

2 MORE MUSCLE.

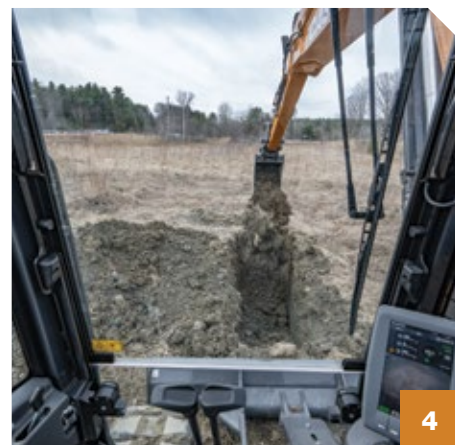
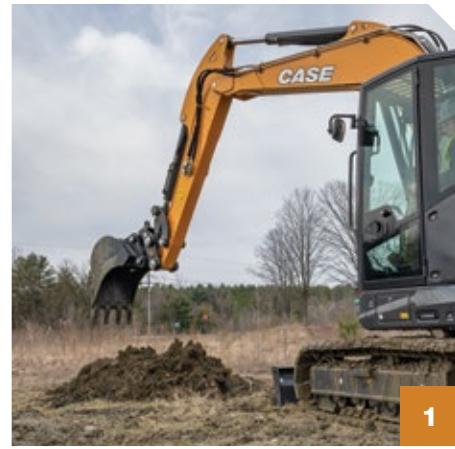
Greater hydraulic power and more breakout force than previous generations help you dig more productively.

3 CRUSH JOBS FROM THE COMFORT OF YOUR CAB.

An adjustable heated air suspension seat, ergonomic, easily reachable boom swing controls and automatic HVAC temperature control make for a comfortable, intuitive and productive operating experience.

4 SEE FAR, GO FAR.

A two-piece front window stows overhead for more visibility while a standard rear view camera enhances on-the-job safety and convenience.



5 4 PRODUCTIVE MODES.

Dial in engine throttle and rpm with your choice of Power, Standard, Economy and User Specific operating modes.

6 MIDI MAINTENANCE.

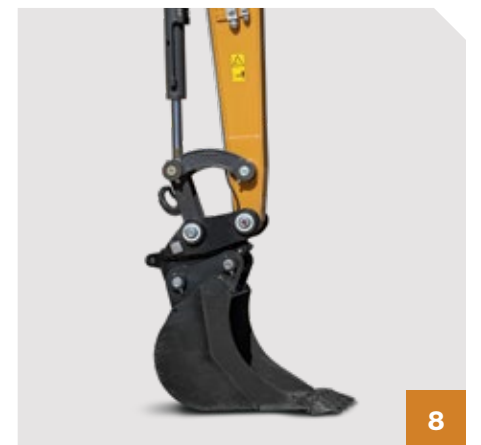
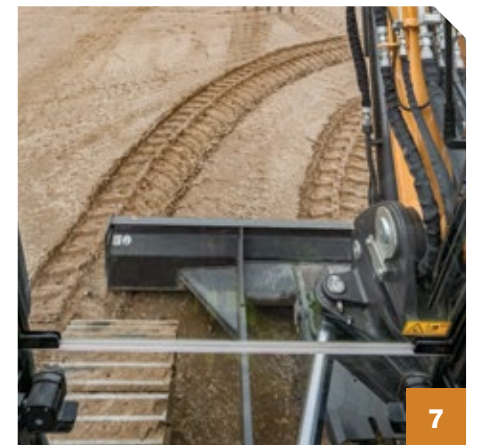
Get no-sweat maintenance at its best — CASE E Series midi excavators offer wide opening panels with easily accessible ground-level service checkpoints, engine components, hydraulics and a tilting cab for quick maintenance and max uptime.

7 TWO VERSATILE DOZING OPTIONS.

A standard two-way dozer blade with increased below-grade depth and height gives greater application versatility and stability on slopes, while an optional six-way blade gives better gradeability when backfilling or grading.

8 ATTACH MORE.

Standard quick coupler auxiliary, multifunction auxiliary hydraulics (AUX1), 2-way low flow (AUX2) and optional 2-way low flow (AUX3) give you total attachment versatility.



CHOOSE THE RIGHT MINI.



SPECIFICATIONS	CX12D	CX19D	CX30D	CX34D	CX38D
Engine	Kubota D722	Yanmar 3TNV76	Kubota D1703	Kubota D1704	Kubota D1705
Horsepower — hp (kW)	11.8 (8.8)	18.4 (13.7)	24.4 (18.2)	24.4 (18.2)	24.4 (18.2)
Max Travel Speed — mph (kph)	2.4 (3.8)	2.7 (4.4)	2.7 (4.3)	2.7 (4.3)	2.7 (4.3)
Max Pump Rated Flow — gpm (L/min)	6.9 (26)	13 (49.1)	26.7 (101)	26.7 (101)	26.7 (101)
Maximum Dig Depth — ft (m)	6.08 (1.86)	7.5 (2.28)	8.6 (2.64)	9.4 (2.87)	10 (3.05)
AUX1 Max Flow — gpm (L/min)	6.9 (26)	8.2 (31.1)	10.6 (40)	10.6 (40)	10.6 (40)
AUX2 Max Flow — gpm (L/min)	3.2 (12)	3.5 (13.1)	8.5 (32)	8.5 (32)	8.5 (32)
Operating Weight* — lb (kg)	2,932 (1 330)	4,145 (1 880)	6,856 (3 110)	7,385 (3 350)	8,620 (3 910)
DIMENSIONS	CX12D	CX19D	CX30D	CX34D	CX38D
Overall Reach Height — ft (mm)	9.92 (3 025)	12.17 (3 710)	13.08 (4 250)	14.5 (4 430)	14.92 (4 550)
Maximum Dig Radius — ft (mm)	11.67 (3 545)	13.83 (4 210)	15.42 (4 700)	16.17 (4 930)	16.75 (5 120)
Overall Height — ft (mm)	7.58 (2 300)	7.75 (2 370)	8.17 (2 510)	8.17 (2 510)	8.25 (2 520)
Overall Transport Length — ft (mm)	11.25 (3 425)	12.67 (3 860)	13.33 (4 105)	13.83 (4 240)	14.08 (4 310)
Machine Width (Retracted Tracks) — ft (mm)	2.58 (790)	3.25 (990)	—	—	—
Machine Max Width — ft (mm)	3.42 (1 050)	4.25 (1 300)	5.08 (1 550)	5.17 (1 580)	5.5 (1 700)

*Specifications may vary based on machine configurations.



SPECIFICATIONS	CX42D	CX50D	CX60D	CX15EV	CX25EV
Engine	Kubota D1803	Perkins 404J-E22T	Kubota V2607-CR-T	—	—
Horsepower — hp (kW)	43.3 (32.3)	58.7 (43.8)	59.4 (44.3)	21 (16)	34 (25)
Max Travel Speed — mph (kph)	2.8 (4.5)	2.8 (4.5)	2.8 (4.5)	2.4 (3.8)	2.5 (4)
Max Pump Rated Flow — gpm (L/min)	28.3 + 5.9 (107 + 22.3)	34.1 + 7.6 (129 + 28.8)	37.2 + 7.3 (141 + 27.8)	—	—
Maximum Dig Depth — ft (m)	10.08 (3.09)	10.92 (3.33)	12.67 (3.85)	6.75 (2.05)	8.42 (2.56)
AUX1 Max Flow — gpm (L/min)	18.5 (70)	18.5 (70)	22.5 (85)	7.4 (28)	13.2 (50)
AUX2 Max Flow — gpm (L/min)	10.6 (40)	10.6 (40)	15.9/10.6 (60/40)	2.6 (10)	3.4 (13)
Operating Weight* — lb (kg)	9,259 (4 200)	11,574 (5 250)	13,162 (5 970)	3,186 (1 445)	5,467 (2 480)
DIMENSIONS	CX42D	CX50D	CX60D	CX15EV	CX25EV
Overall Reach Height — ft (mm)	16.42 (5 010)	17.25 (5 260)	19.5 (5 950)	10.42 (3 115)	12.75 (3 885)
Maximum Dig Radius — ft (mm)	17.75 (5 400)	18.5 (5 630)	21.33 (6 490)	12 (3 645)	15 (4 480)
Overall Height — ft (mm)	8.25 (2 510)	8.42 (2 570)	8.33 (2 550)	7.58 (2 300)	7.83 (2 395)
Overall Transport Length — ft (mm)	17.42 (5 300)	18.33 (5 580)	19.67 (6 000)	10.42 (3 180)	13.58 (4 145)
Machine Width (Retracted Tracks) — ft (mm)	—	—	—	2.58 (790)	3.25 (990)
Machine Max Width — ft (mm)	5.75 (1 750)	6.25 (1 900)	6.5 (1 980)	3.42 (1 050)	4.25 (1 300)

*Specifications may vary based on machine configurations.

CHOOSE YOUR MIDI METRICS.



SPECIFICATIONS	CX85E	CX90E
Engine	Yanmar 4TNV98CT	Yanmar 4TNV98CT
Emissions Certification	Tier 4 Final/Stage V	Tier 4 Final/Stage V
Net Horsepower @ 2000 rpm — hp (kW)	72 (53.3)	72 (53.3)
Bucket Digging Force — lb (kN)	14,163 (63)	14,163 (63)
Arm Digging Force — lb (kN)	9,779 (44)	9,779 (44)
Maximum Digging Depth — ft (m)	12 (3.66)	13.58 (4.14)
Operating Weight (w/ Rubber Tracks) — lb (kg)	19,467 (8 830)	20,305 (9 210)
Drawbar Pull — lbf (kN)	17,895 (79.6)	17,895 (79.6)
DIMENSIONS	CX85E	CX90E
Overall Height — ft (mm)	9.08 (2 760)	9.08 (2 760)
Overall Transport Length — ft (mm)	19.08 (5 820)	19.08 (5 820)
Width of Upper Structure — ft (mm)	7.58 (2 300)	7.58 (2 300)
Track Overall Length — ft (mm)	9.5 (2 896)	9.5 (2 896)
Track Overall Width (w/ 17.55-in Shoes) — ft (mm)	7.58 (2 320)	7.58 (2 320)
Track Shoe Width — ft (mm)	1.5 (450)	1.5 (450)
Center to Center (Idler to Sprocket) — ft (mm)	7.58 (2 303)	7.58 (2 303)
Upper Structure Ground Clearance — ft (mm)	2.33 (705)	2.33 (705)
Minimum Ground Clearance — ft (mm)	1.17 (363)	1.17 (363)
Tail Swing Radius (Standard Counterweight) — ft (mm)	4 (1 220)	1.75 (525)

GIVE YOUR LINEUP A JOLT.



ELECTRICAL POWERTRAIN	CX15EV	CX25EV
Nominal Battery Voltage	102V	102V
Total Battery Capacity — kWh	21.5	32.3
On-Board Charger	120V 1Ø NEMA 5-15	240V 1Ø NEMA 6-20
Charging Time: 20–80% — hr	8.5	5
Charging Time: 0–100% — hr	14	9
Run Time — hr	4–8 (depending on application)	4–8 (depending on application)
Electric Motor Rated Power — hp (kW)	21.4 (16)	33.5 (25)

WARRANTY	CX15EV	CX25EV
Vehicle Base Warranty — yr/hr	2-yr/2,000-hr	2-yr/2,000-hr
EV Components Warranty*	3-yr/3,000-hr	3-yr/3,000-hr
EV Care** — yr/hr	—	3-yr/3,000-hr

*Includes all electric powertrain system components including battery, motors, inverters, etc. **More details on EV Care available on page 19.

BUILD YOUR FLEET FROM THE GROUND UP.

SPECIFICATIONS	CX12D	CX19D	CX30D	CX34D	CX38D	CX42D	CX50D	CX60D	CX15EV	CX25EV
Enclosed Cab w/ ROPS/TOPS/FOPS Level 1	—	○	○	○	●	○	●	●	—	○
Air Conditioning	—	—	○	○	●	○	●	●	—	—
Adjustable Air Suspension Seat w/ Seat Belt	—	—	—	—	●	—	○	●	—	—
Rear View Camera	—	—	—	—	—	○	○	●	—	—
7-in LCD Display w/ Navigation Console	—	—	—	—	—	○	○	●	—	—
Radio	—	○	○	○	●	○	●	●	—	○
Retractable Tracks/Undercarriage	●	●	—	—	—	—	—	—	—	●
Zero Tail Swing w/ Standard Counterweight	●	●	●	●	●	●	●	●	—	—
LED Work Lights	●	●	●	●	●	●	●	●	●	●
1st Auxiliary: 1 or 2-Way Operation	●	●	●	●	●	●	●	●	●	●
2nd Auxiliary: 2-Way	●	●	●	●	●	●	●	●	○	○
3rd Auxiliary: 2-Way	—	—	—	—	—	○	○	—	—	—
Additional Counterweight	○	○	○	○	○	○	○	○	—	—
Steel Tracks	—	—	○	○	○	○	○	○	—	—
Travel Alarm	●	●	●	●	●	●	●	●	●	●
CASE Telematics	●	●	●	●	●	●	●	●	●	●
Battery DC Fast Charge Connector (EV Models Only)	—	—	—	—	—	—	—	—	●	●
Offboard DC Fast Charger (EV Models Only)	—	—	—	—	—	—	—	—	○	○

ENCLOSED CAB WITH ROPS/TOPS/FOPS LEVEL 1	CX85E	CX90E
Auto Climate Control A/C & Heating	●	●
Adjustable Air Suspension Heated Seat w/ Seat Belt	●	●
Rear View Camera	●	●
7-in LCD Display w/ Navigation Console	●	●
Zero Tail Swing w/ Standard Counterweight	●	●
Long Arm w/ Thumb Bracket	●	●
Short Arm w/ Thumb Bracket	●	●
Pin on Bucket	○	○
Standard Counterweight	●	●
Additional Counterweight	●	●
Bucket Linkage w/ Lifting Hook	○	○
18-in Steel Shoes w/ Rubber Pad Tracks	●	●
18-in Steel Track Shoes	●	●
24-in Steel Track Shoes	○	○
Rubber Belt Tracks	○	○
6-Way Dozer Blade w/ Cutting Edge, Float & Dual Side Foldable Extensions	○	○

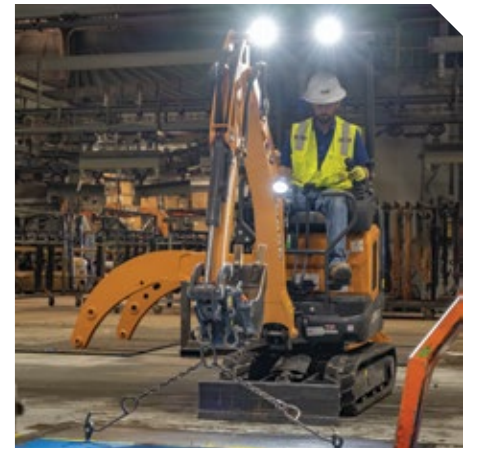
● Standard ○ Optional — Not Applicable

GO AHEAD. GET ATTACHED.

The only thing bigger than our huge lineup of mini and midi excavators? The amount of jobs you can crush with mini and midi ex attachments. With a huge array of options and features like proportional thumb-roller controls, SAE and ISO pattern selection and 1- or 2-way flow combination auxiliary hydraulics, you get tons of attachment versatility — including augers, mulchers, grapples, digging buckets, ditch-cleaning buckets, compaction wheels, grading buckets, rippers and more — without sacrificing on power.



See our full line at
**CASECE.COM/
ATTACHMENTS**



Quick Coupler



Digging Bucket



Grading Bucket



Thumb

NO ONE OUTWORKS US.

The customer doesn't just come first — you're at the center of everything we do. Your local CASE specialists are ready to help you do more of everything you do best: maximizing production, cutting costs and improving safety through a variety of services and technology.



Extended Limited Warranty Coverage*

- Midi and Mini Excavators (CX-C, CX-D and CX-E Series): 2-year/3,000-hour Full Machine Limited Warranty.



Tech that Delivers.

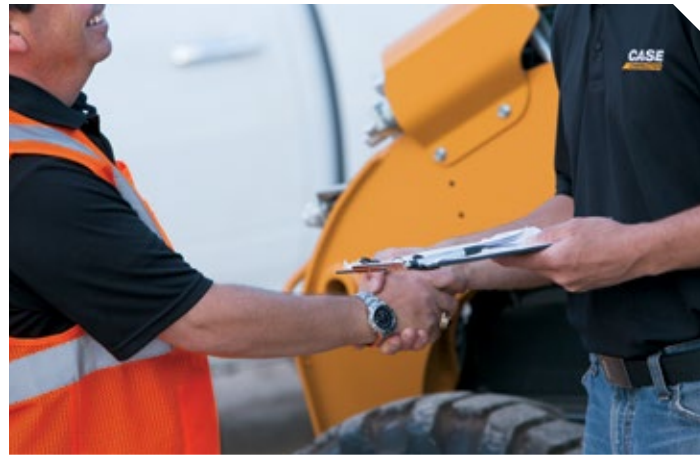
Command Your Fleet with Telematics

CASE Telematics puts real-time data in your hands. Track location, monitor working status and anticipate maintenance needs across your entire fleet — helping you turn good data into good decisions.

Precision Machine Control that Pays for Itself

SiteControl machine control solutions don't just improve accuracy — they transform profitability. Up your efficiency, productivity and profits anywhere the job takes you.

*See your CASE dealer for limitations, exclusions and confirmation of policies in effect. Engine/EV Batteries warranty coverage provided through CASE. Second year machine warranty coverage applies after base warranty expires.



CNH CAPITAL Performance Equipment Demands Performance Financing.

From protection plans to customized leasing packages, our financial solutions through CNH Capital are engineered for businesses that don't have time for downtime.



Local Support. National Strength.

We back tough equipment with even tougher support. With over 300 dealer locations across North America, CASE delivers the right equipment, financing solutions and after-sale support to keep your business moving forward. That's the kind of boots-on-the-ground business support you can expect — and rely on — from CASE.



Protect Your Investment.

EV Care

EV Care is our unique and comprehensive support package exclusively available for our EV models. EV Care consists of a 5-year CASE Telematics Subscription, a 3-year/3,000-hour battery and EV components factory warranty and 3-year/3,000-hour planned maintenance.

Planned Maintenance Agreements (PMAs)

Get clear, detailed maintenance plans that maximize performance while driving down operating costs, allowing you to focus on what matters — building your business.

Purchased Protection Plan (PPP)

Get protection beyond the base warranty period for both new and used CASE equipment, with flexible payment options and customizable terms through CNH Capital.

▶▶▶ COUNTLESS SOLUTIONS



Mini Track Loaders



Skid Steer Loaders



Compact Track Loaders



Compact Dozer Loaders



Mini Excavators



Midi Excavators



Small Articulated Loaders



Compact Wheel Loaders



Electric Vehicles



Backhoe Loaders



Tractor Loaders



Rough Terrain Forklifts



Dozers



Large Wheel Loaders



Motor Graders



Wheeled Excavators



Large Excavators

NO ONE WILL OUTWORK US.™



©2025 CNH Industrial America LLC. All rights reserved. CASE and CNH Industrial are trademarks registered in the United States and many other countries, owned by or licensed to CNH Industrial N.V., its subsidiaries or affiliates. Any trademarks referred to herein, in association with goods and/or services of companies other than CNH Industrial America LLC., are the property of those respective companies.

Form No. CCE202509MHXEMIDI

IMPORTANT: CASE Construction Equipment Inc. reserves the right to change these specifications without notice and without incurring any obligation relating to such change. Availability of some models and equipment builds vary according to the country in which the equipment is used. The illustrations and text may include optional equipment and accessories and may not include all standard equipment. Your CASE dealer/distributor will be able to give you details of the products and their specifications available in your area.

CASE Construction Equipment is biodiesel-friendly.

NOTE: All engines meet current EPA emissions regulations. All specifications are stated in accordance with SAE Standards or Recommended Practices, where applicable.

Always read the Operator's Manual before operating equipment. Inspect equipment before using it, and be sure it is operating properly. Follow the product safety signs and use any safety features provided.