

**B SERIES** SR160B | SR175B | SV185B | SR210B | SR240B | SR270B | SV280B | SV340B

**SKID**

**STEER**

**LOADERS**



**CASE**  
CONSTRUCTION

# GETTING THE JOB DONE, CASE AFTER CASE.



Every day, the case for CASE Construction Equipment grows stronger — from delivering smart solutions for tough on-site challenges to providing the next generation of builders the tools needed to succeed, CASE machines are backed by more than 180 years of grit, sweat and get-the-job-done efficiency.

That no-nonsense attitude extends to our team, too: with over 300 North American dealer locations, a pipeline of inventors and engineers who will stop at nothing to create swift, smooth machines, service technicians who offer fix-it-right the first time service and an expansive parts inventory available at your fingertips, we're serious about offering steadfast sales, service and support as your construction equipment partner.

Together, we're not just building infrastructure — we're building stronger communities on a rock-solid foundation of hard work, hustle and pragmatic innovation. Because when it comes to helping you achieve your goals, no one will outwork us.

## SKID STEER LOADERS

02 CASE Story

03 Overview

04 Features & Benefits

06 Specifications

08 Attachments

10 Value of Support



# SKID INTO FIRST PLACE.

More than half a century — that's how long CASE skid steer loaders (SSL) have been lifting, loading, land-clearing, sub-grading and setting the bar for every job.

The CASE B Series Skid Steer Loader combines everything we've learned along the way. Take time-tested frame strength and styling, pair it with plenty of power and breakout force, add loads of visibility and combine it with a host of operator-friendly features—and you get a workhorse machine that adapts to any job while letting you do more in less time.

SR160B



SR175B



SV185B



SR210B



SR240B



SR270B



SV280B



SV340B



# MORE FEATURES. MORE POSSIBILITIES.

Take a peek under the hood of a CASE B Series skid steer loader and see how every feature is designed, tested and proven to help crush construction and landscaping jobs alike.



## 1 Amped-Up Hydraulics.

- › Optional High Flow delivers more power.
- › Enhanced High Flow provides 4,000 psi for auxiliary hydraulics to run demanding attachments.
- › Implement Flow Control lets you adjust options for optimal performance.

## 2 Blind Spots? No, Thanks.

Big front and side windows give you clear sightlines down to the bucket. 360-degree LED lighting lets you adapt to every situation while rear backup cameras, intermittent wipers and rear object detection on select machines offer even more foresight.

## 3 Auto Ride Control.

Four different ride control activation speeds give you a customizable machine that meets any and every operational need.

## 4 Reach New Heights.

Choose between two lifting options:

- › Radial lift for tight-space loading, grading, prying and below-grade digging.
- › Vertical lift for material handling, truck loading and pallet stacking.

## 5 Easy Operation.

Electro-hydraulic controls make skid steers easy to operate. Joysticks are also streamlined for maximum ergonomics and comfort—toggle between H and ISO patterns to fine-tune your controls based on your preferences.



## 6 Tough Engine Protection.

Engine shutdown and ignition timeout features help engines, batteries and critical systems run stronger and longer.

## 7 Tier 4 Emission Solutions.

No complex maintenance or filter replacements here. Tier 4 Final-certified equipment is easier to service and offers industry compliance without complexity, maximizing your output while cutting down on downtime.

## 8 Operator-Centric Design.

Enter a cab with low entry, large steps, a wide door and more legroom. The 8-inch LCD display lets you easily tap into machine settings while an optional enclosed cab gives you heating and air conditioning—reducing fatigue and keeping you comfortably in the zone.

## 9 Simple Service.

Features like swing-out doors and easily accessible maintenance points make serviceability a snap.

## 10 Construction-Grade Support.

In addition to its remote monitoring and diagnostics offering, CASE's network of over 300 dealer locations is ready with technicians for tune-ups, repairs and support.



# STEER YOUR WAY TO SUCCESS.



SPECIFICATIONS	SR160B	SR175B	SV185B	SR210B	SR240B	SR270B	SV280B	SV340B
<b>Lift Configuration</b>	Radial	Radial	Vertical	Radial	Radial	Radial	Vertical	Vertical
<b>Engine</b>	Perkins NB44LT-F-45SL	Perkins 404F-E22TA	Perkins 404F-E22TA	FPT F5H FL463 A*G001	FPT F5H FL463 A*G001	FPT F5B FL413 D*C001	FPT F5H FL463 A*G001	FPT F5B FL413 D*C001
<b>Gross Horsepower – hp (kW)</b>	60 (44.7)	67 (50)	60 (44.7)	74 (55)	74 (55)	90 (67)	74 (55)	90 (67)
<b>Net Horsepower – hp (kW)</b>	57 (42.2)	64 (47.7)	57 (42.4)	68 (51)	68 (51)	84 (63)	68 (51)	84 (63)
<b>Peak Torque – lb ft (Nm)</b>	139 (188)	153 (208)	135 (183)	232 (314)	232 (314)	282 (383)	232 (314)	282 (383)
<b>Displacement/ Cylinders – in³ (L)</b>	135.2 (2.2) / 4	135.2 (2.2) / 4	135.2 (2.2) / 4	207.0 (3.4) / 4	207.0 (3.4) / 4	207.0 (3.4) / 4	207.0 (3.4) / 4	207.0 (3.4) / 4
<b>Emissions Certification* Solutions</b>	Tier 4 Final (CEGR, DOC, DPF)	Tier 4 Final (CEGR, DOC, DPF)	Tier 4 Final (CEGR, DOC, DPF)	Tier 4 Final (CEGR, DOC, DPF)	Tier 4 Final (CEGR, SCR)	Tier 4 Final (CEGR, SCR)	Tier 4 Final (CEGR, SCR)	Tier 4 Final (CEGR, SCR)
<b>Rated Operating Capacity (ROC) 50% – lb (kg)</b>	1,600 (726)	1,750 (790)	1,850 (840)	2,100 (955)	2,400 (1 088)	2,700 (1 225)	2,800 (1 270)	3,400 (1 545)
<b>Tipping Load – lb (kg)</b>	3,200 (1 455)	3,500 (1 588)	3,700 (1 678)	4,200 (1 905)	4,800 (2 177)	5,400 (2 450)	5,600 (2 540)	6,800 (3 090)
<b>Bucket Cylinder Breakout Force – lb (kN)</b>	5,270 (23.4)	7,270 (32.3)	5,550 (24.7)	7,270 (32.3)	8,680 (39.4)	8,677 (38.6)	8,620 (38.3)	9,531 (42.4)
<b>Standard Auxiliary Hydraulics – gpm (L/min)</b>	18.4 (69.7)	20.6 (78.0)	20.6 (78.0)	24.2 (91.5)	24.2 (91.5)	24.2 (91.5)	24.2 (91.5)	24.2 (91.5)
<b>High-Flow Auxiliary Hydraulics – gpm (L/min)</b>	—	30.7 (116.2)	30.7 (116.2)	33.2 (125.7)	37.6 (142.5)	37.6 (142.5)	37.6 (142.5)	38.7 (146.5)
<b>Operating Weight – lb (kg)</b>	5,645 (2 560)	6,270 (2 842)	6,570 (2 980)	6,970 (3 160)	7,400 (3 350)	8,117 (3 681)	8,000 (3 630)	9,100 (4 136)
DIMENSIONS	SR160B	SR175B	SV185B	SR210B	SR240B	SR270B	SV280B	SV340B
<b>Height to Bucket Hinge Pin – in (m)</b>	112.0 (2.85)	122.0 (3.10)	120.0 (3.05)	123.0 (3.12)	125.1 (3.18)	125.1 (3.18)	129.5 (3.29)	131.6 (3.34)
<b>Dump Height with Low-Profile Bucket** – in (m)</b>	84.8 (2.15)	94.6 (2.4)	90.7 (2.31)	95.6 (2.43)	98.3 (2.50)	98.3 (2.50)	102.2 (2.59)	102.2 (2.59)
<b>Height to Top of ROPS – in (m)</b>	75.5 (1.92)	77.7 (1.97)	77.7 (1.97)	78.7 (2.00)	78.8 (2.00)	78.8 (2.00)	78.8 (2.00)	80.4 (2.04)
<b>Overall Length with Low-Profile Bucket – in (m)</b>	125 (3.18)	134.3 (3.41)	135.8 (3.45)	133.7 (3.40)	146.2 (3.71)	148.0 (3.76)	146.8 (3.73)	148.5 (3.77)
<b>Over-the-Tire Width with Spec. Tires – in (m)</b>	59.8 (1.52)	64.6 (1.64)	64.6 (1.64)	69.1 (1.76)	69.6 (1.77)	69.8 (1.77)	69.6 (1.77)	73.8 (1.88)

\*Note: CEGR = Cooled Exhaust Gas Recirculation DOC = Diesel Oxidation Catalyst DPF = Diesel Particulate Filter SCR = Selective Catalytic Reduction \*\*Bucket angle rounded to the nearest degree

# BUILD YOUR FLEET FROM THE GROUND UP.

OPERATOR ENVIRONMENT	SR160B	SR175B	SV185B	SR210B	SR240B	SR270B	SV280B	SV340B
<b>Open Cab (No Heat or HVAC)</b>	●	●	●	●	●	●	●	●
<b>Enclosed Cab with Heat and AC</b>	—	○	○	○	○	○	○	○
<b>Enclosed Cab with Heat</b>	○	—	—	—	—	—	—	—
<b>Demolition Door</b>	○	○	○	○	○	○	○	○
<b>Operator Security Codes</b>	○	○	○	○	○	○	○	○
<b>8-in LCD Multi-Function Display</b>	—	○	○	○	○	○	○	○
<b>Machine Settings User Access Levels</b>	—	○	○	○	○	○	○	○
<b>Creep Speed</b>	—	○	○	○	○	○	○	○
<b>Economy Modes</b>	—	○	○	○	○	○	○	○
<b>Ignition Timeout</b>	—	○	○	○	○	○	○	○
<b>Engine Protection Settings</b>	—	○	○	○	○	○	○	○
<b>Suspension Seat, Vinyl</b>	●	●	●	●	●	●	●	●
<b>Air Ride Suspension/Heated Seat</b>	○	○	○	○	○	○	○	○
<b>One-Speed Controls</b>	●	—	—	—	—	—	—	—
<b>Two-Speed Controls</b>	—	●	●	●	●	●	●	●
<b>Hand Controls</b>	●	●	●	●	●	●	●	●
<b>Hand and Foot Controls</b>	○	○	○	○	○	○	○	○
<b>Electro-Hydraulic Controls</b>	—	○	○	○	○	○	○	○
<b>CASE SiteWatch™ Telematics</b>	○	○	○	○	○	○	○	○
<b>FOPS Level-2 Modification</b>	○	○	○	○	○	○	○	○
<b>Rearview Mirror</b>	●	●	●	●	●	●	●	●
HYDRAULICS	SR160B	SR175B	SV185B	SR210B	SR240B	SR270B	SV280B	SV340B
<b>Standard Auxiliary Hydraulics</b>	●	●	●	●	●	●	●	●
<b>High-Flow Auxiliary Hydraulics</b>	—	○	○	○	○	○	○	○
<b>Enhanced High-Flow Auxiliary Hydraulics</b>	—	—	—	—	—	○	—	○
<b>Secondary Auxiliary Hydraulics</b>	—	○	○	○	○	○	○	○
<b>Manual Coupler</b>	●	●	●	●	●	●	●	●
<b>Hydraulic Coupler</b>	○	○	○	○	○	○	○	○
<b>Front Electric/Multi-Function</b>	—	●	●	●	●	●	●	●
<b>Auxiliary Flow Control within Cab</b>	—	○	○	○	○	○	○	○
LOADER	SR160B	SR175B	SV185B	SR210B	SR240B	SR270B	SV280B	SV340B
<b>Auto Ride Control</b>	—	○	○	○	○	○	○	○
<b>Ride Control™</b>	○	○	○	○	○	○	○	○
<b>One-Way Self Level</b>	○	○	○	○	○	○	○	○
<b>Single-Point Lift Hook</b>	○	○	○	○	○	○	○	○
<b>Four-Point Lift Hook</b>	—	○	○	○	○	○	○	○
<b>Cylinder Guard</b>	—	○	○	○	○	○	○	○
<b>Extra Counterweight</b>	○	○	○	○	○	○	○	○
ENGINE	SR160B	SR175B	SV185B	SR210B	SR240B	SR270B	SV280B	SV340B
<b>Aspirator</b>	○	○	○	○	○	○	○	○
<b>Block Heater, 120V</b>	●	●	●	●	●	●	●	●
EXTERIOR	SR160B	SR175B	SV185B	SR210B	SR240B	SR270B	SV280B	SV340B
<b>Standard Rear Door</b>	●	●	●	—	—	—	—	—
<b>Heavy-Duty Rear Door</b>	—	—	—	●	●	●	●	●
<b>Beacon Light</b>	○	○	○	○	○	○	○	○
<b>Heavy-Duty Front Lights</b>	●	●	●	●	●	●	●	●
<b>Side Lamp</b>	●	●	●	●	●	●	●	●
<b>Four-Corner LED Strobe</b>	○	○	○	○	○	○	○	○
<b>Special Paint</b>	○	○	○	○	○	○	○	○
<b>Debris Seal Package</b>	●	●	●	●	●	●	●	●

● Standard ○ Optional — Not Applicable

# GO AHEAD. GET ATTACHED.

Skid steers and attachments go together like dirt and hard work. With hydraulic options that let you run cold planers, mulching heads and stump grinders — plus a new attachment display catalog designed to give you confidence for using specialized equipment — you get tons of versatility in one easy-to-use machine.



Laser Grading Box



Mulcher



Rock Saw



Angle Broom



Vibratory Roller



Hydraulic Breaker



Side Discharge Bucket



4-in-1 Bucket



Tree Puller



Bale Handler



Scrap Grapple



Root Rake



6-Way Dozer Blade



Pickup Broom



Pallet Forks



Cold Planer



Auger



Rotary Cutter



Trencher



Arctic® Sectional Sno-Pusher™



SEE OUR FULL LINE AT

**CASECE.COM/  
ATTACHMENTS**



# NO ONE OUTWORKS US.

The customer doesn't just come first — you're at the center of everything we do. Your local CASE specialists are ready to help you do more of everything you do best: maximizing production, cutting costs and improving safety through a variety of services and technology.



## Base & Extended Limited Warranty Coverage.\*

- > 1-year/Unlimited-hour full-coverage base limited warranty
- > 2-year/2,000-hour extended limited engine warranty. Discuss the extended warranty coverage details with your dealer.



## Tech that Delivers.

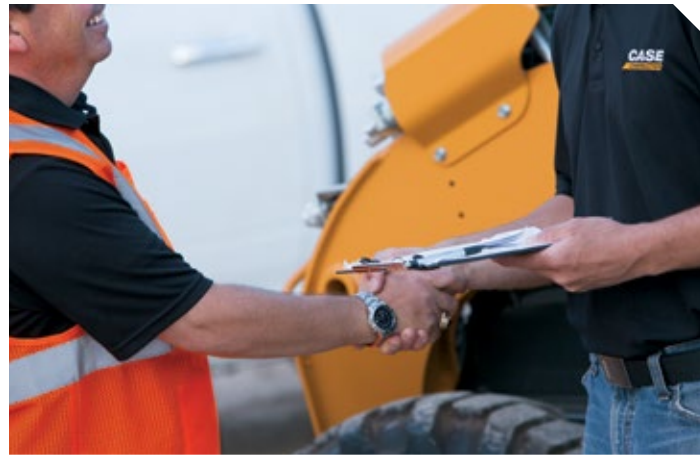
### Command Your Fleet with Telematics

CASE Telematics puts real-time data in your hands. Track location, monitor working status and anticipate maintenance needs across your entire fleet — helping you turn good data into good decisions.

### Precision Machine Control that Pays for Itself

SiteControl machine control solutions don't just improve accuracy — they transform profitability. Up your efficiency, productivity and profits anywhere the job takes you.

\*See your CASE dealer for limitations, exclusions and confirmation of policies in effect. Engine/EV Batteries warranty coverage provided through CASE. Second year machine warranty coverage applies after base warranty expires.



## CNH CAPITAL Performance Equipment Demands Performance Financing.

From protection plans to customized leasing packages, our financial solutions through CNH Capital are engineered for businesses that don't have time for downtime.



## Local Support. National Strength.

We back tough equipment with even tougher support. With over 300 dealer locations across North America, CASE delivers the right equipment, financing solutions and after-sale support to keep your business moving forward. That's the kind of boots-on-the-ground business support you can expect — and rely on — from CASE.



## Protect Your Investment.

### PlusCare

Choose service options that match how hard you work. CASE PlusCare protects your equipment investment with customizable maintenance support tailored to your operation's demands. [Scan QR code for more information >](#)



### Planned Maintenance Agreements (PMAs)

Get clear, detailed maintenance plans that maximize performance while driving down operating costs, allowing you to focus on what matters — building your business.

### Purchased Protection Plan (PPP)

Get protection beyond the base warranty period for both new and used CASE equipment, with flexible payment options and customizable terms through CNH Capital.

# ▶▶▶ COUNTLESS SOLUTIONS



Mini Track Loaders



Skid Steer Loaders



Compact Track Loaders



Compact Dozer Loaders



Mini Excavators



Midi Excavators



Small Articulated Loaders



Compact Wheel Loaders



Electric Vehicles



Backhoe Loaders



Tractor Loaders



Rough Terrain Forklifts



Dozers



Large Wheel Loaders



Motor Graders



Wheeled Excavators



Large Excavators

**NO ONE WILL OUTWORK US.™**



©2025 CNH Industrial America LLC. All rights reserved. CASE and CNH Industrial are trademarks registered in the United States and many other countries, owned by or licensed to CNH Industrial N.V., its subsidiaries or affiliates. Any trademarks referred to herein, in association with goods and/or services of companies other than CNH Industrial America LLC., are the property of those respective companies.

Form No. CCE202509SSL  
Replaces Form No. CCE202506SSL

**IMPORTANT:** CASE Construction Equipment Inc. reserves the right to change these specifications without notice and without incurring any obligation relating to such change. Availability of some models and equipment builds vary according to the country in which the equipment is used. The illustrations and text may include optional equipment and accessories and may not include all standard equipment. Your CASE dealer/distributor will be able to give you details of the products and their specifications available in your area.

CASE Construction Equipment is biodiesel-friendly.

**NOTE:** All engines meet current EPA emissions regulations. All specifications are stated in accordance with SAE Standards or Recommended Practices, where applicable.

Always read the Operator's Manual before operating equipment. Inspect equipment before using it, and be sure it is operating properly. Follow the product safety signs and use any safety features provided.